

Paradiddle manipulations

Accents in sixteenth note patterns, single paradiddle sticking

Atma Anur

♩ = 80 to 160

1a

r l r r l r l l r l r r l r l l

Individual partial accents

all examples use RLRR LLLL sticking pattern

b

c

d

on "e"

2a

on "and"

b

on "a"

c

2 note accents

all examples use RLRR LLLL sticking pattern

(1,2)
3a

(1,3)
b

(1,4)
c

(2,3)
d

(3,4)
e

(2,4)
f

accents in 3s

(1)3
4a

counting example: 1 2 3 1 2 3 1 2 3 1 2 3 1 2 3 1 2 3 1 2 3

accents in 5s

b (1)5

Musical notation for accents in 5s. The staff is in bass clef with a 10/4 time signature. It features ten groups of five eighth notes, each with an accent (>) over the first note. The notes are on the lines G, B, D, F, and A. An 'x' is placed below the staff under the first note of each group. The piece ends with a double bar line and repeat dots.

accents in 6s

c (1)6

Musical notation for accents in 6s. The staff is in bass clef with a 6/4 time signature. It features six groups of six eighth notes, each with an accent (>) over the first note. The notes are on the lines G, B, D, F, A, and C. An 'x' is placed below the staff under the first note of each group. The piece ends with a double bar line and repeat dots.

accents in 7s

d (1)7

Musical notation for accents in 7s. The staff is in bass clef with a 7/4 time signature. It features seven groups of seven eighth notes, each with an accent (>) over the first note. The notes are on the lines G, B, D, F, A, C, and E. An 'x' is placed below the staff under the first note of each group. The piece ends with a double bar line and repeat dots.

Musical notation for accents in 7s (continued). The staff is in bass clef with a 7/4 time signature. It features seven groups of seven eighth notes, each with an accent (>) over the first note. The notes are on the lines G, B, D, F, A, C, and E. An 'x' is placed below the staff under the first note of each group. The piece ends with a double bar line and repeat dots.

accents in 9s

e (1)9

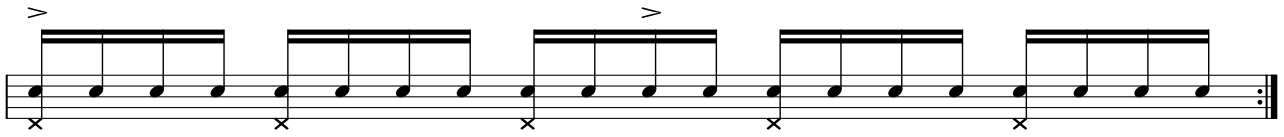
Musical notation for accents in 9s. The staff is in bass clef with a 9/4 time signature. It features nine groups of nine eighth notes, each with an accent (>) over the first note. The notes are on the lines G, B, D, F, A, C, E, G, and B. An 'x' is placed below the staff under the first note of each group. The piece ends with a double bar line and repeat dots.

Musical notation for accents in 9s (continued). The staff is in bass clef with a 9/4 time signature. It features nine groups of nine eighth notes, each with an accent (>) over the first note. The notes are on the lines G, B, D, F, A, C, E, G, and B. An 'x' is placed below the staff under the first note of each group. The piece ends with a double bar line and repeat dots.

accents in 10s

f (1)10

Musical notation for accents in 10s. The staff is in bass clef with a 10/4 time signature. It features five groups of ten eighth notes, each with an accent (>) over the first note. The notes are on the lines G, B, D, F, A, C, E, G, B, and D. An 'x' is placed below the staff under the first note of each group. The piece ends with a double bar line and repeat dots.



accents in 11s

