

Perpetual Burn Ideas 2

Grooves and selected fills

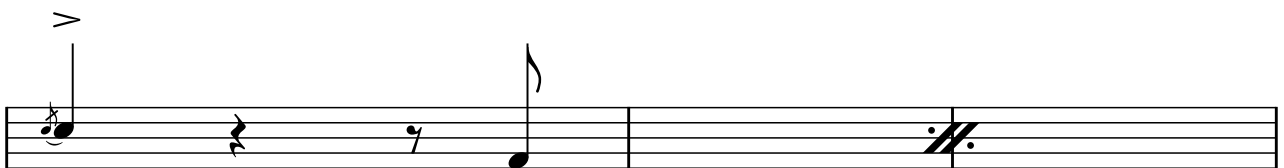
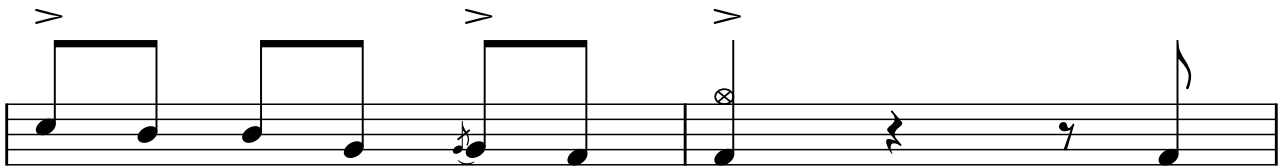
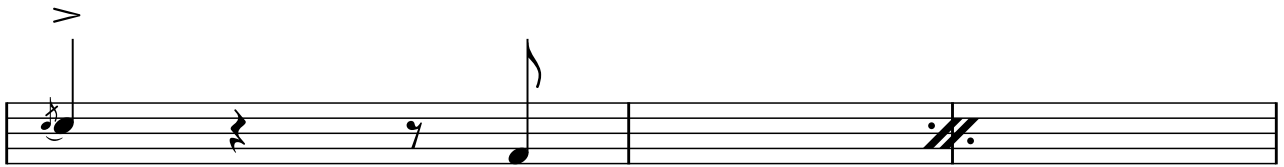
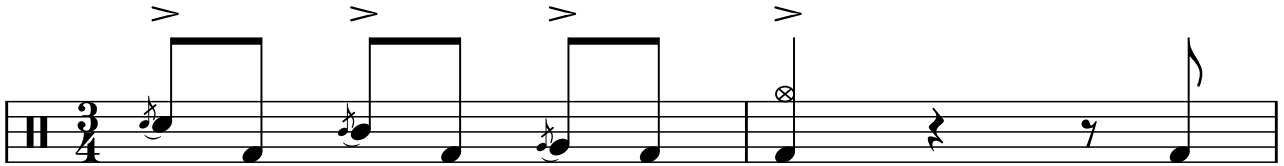
Atma Anur

♩ = 107

Altitudes

1) intro

0:48 to 1:24



Three staves of musical notation for a drum set. The first staff shows a sequence of eighth notes with accents (>) on the 4th and 6th notes. The second staff shows a sequence of eighth notes with accents (>) on the 1st and 5th notes. The third staff shows a sequence of eighth notes with accents (>) on the 1st and 5th notes, and dynamic markings p, m, m, f, ff on the 4th, 5th, 6th, and 7th notes respectively.

2) Basic groove for first 4/4 section

1:24 to 1:56

Two staves of musical notation for a drum set in 4/4 time. The first staff shows a sequence of eighth notes with accents (>) on the 1st and 5th notes, and a circled 'o' above the 3rd and 7th notes. The second staff shows a sequence of eighth notes with accents (>) on the 1st and 5th notes, and a circled 'o' above the 3rd and 7th notes.

3) Second 4/4 groove with ride cymbal and open hihat played with left foot

1:58 to 2:30

One staff of musical notation for a drum set in 4/4 time. The staff shows a sequence of eighth notes with accents (>) on the 1st and 5th notes, and a circled 'o' above the 3rd and 7th notes.

first tom fill

2:14

4) next groove section

2:34 to 3:08

5) next groove section with ride cymbal

3:08 to 3:41

fill at 3:39

6) next groove section with open hihat

Musical notation for a groove section with an open hihat. The notation is on a single staff with a treble clef and a key signature of one flat. It consists of four measures. The first three measures each contain a pair of eighth notes with an 'x' above them, indicating an open hihat. The first measure has an 'ø' above the first note. The second measure has an 'ø' above the second note. The third measure has an accent (>) above the first note and an 'ø' above the second note. The fourth measure has an 'ø' above the first note. The notes are on the G4 and A4 lines of the staff.

7) Interesting fills

fill at 3:47

Musical notation for a fill at 3:47. The notation is on a single staff with a treble clef and a key signature of one flat. It consists of four measures. The first three measures each contain a pair of eighth notes with an 'x' above them, indicating an open hihat. The first measure has an 'ø' above the first note. The second measure has an 'ø' above the second note. The third measure has an 'ø' above the first note. The fourth measure has an 'ø' above the first note. The notes are on the G4 and A4 lines of the staff.

fill at 3:53

Musical notation for a fill at 3:53. The notation is on a single staff with a treble clef and a key signature of one flat. It consists of four measures. The first three measures each contain a pair of eighth notes with an 'x' above them, indicating an open hihat. The first measure has an accent (>) above the first note. The second measure has an accent (>) above the second note. The third measure has an accent (>) above the first note. The fourth measure has an accent (>) above the first note and an 'ø' above the second note. The notes are on the G4 and A4 lines of the staff.

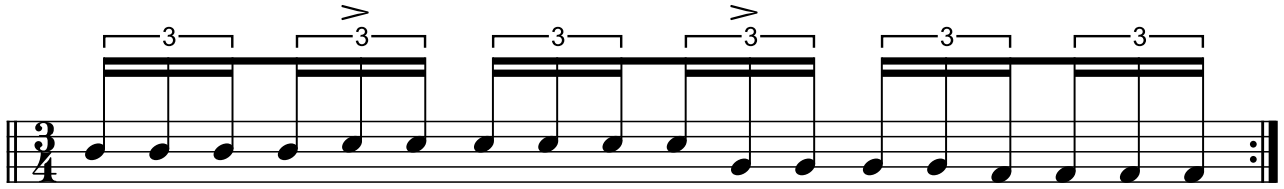
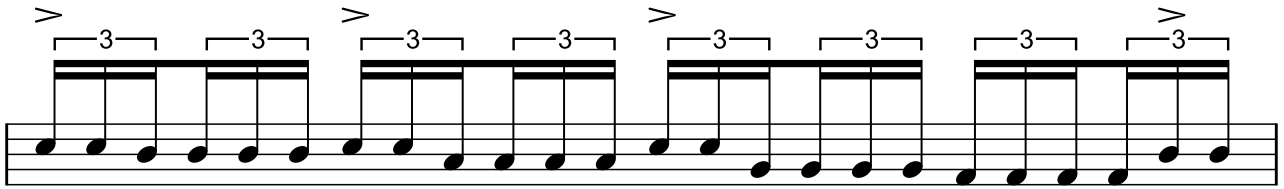
Musical notation for a fill. The notation is on a single staff with a treble clef and a key signature of one flat. It consists of four measures. Each measure contains a pair of eighth notes with an accent (>) above the first note. The notes are on the G4 and A4 lines of the staff.

fill at 4:13

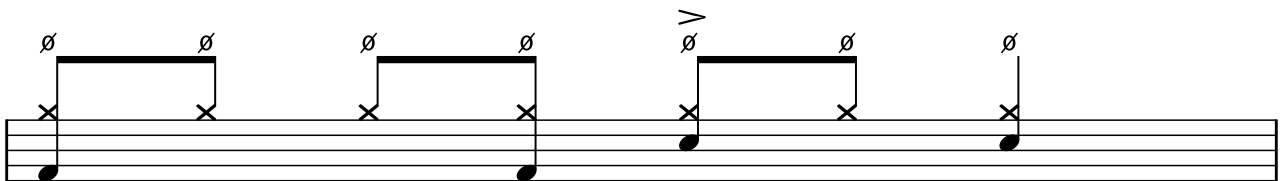
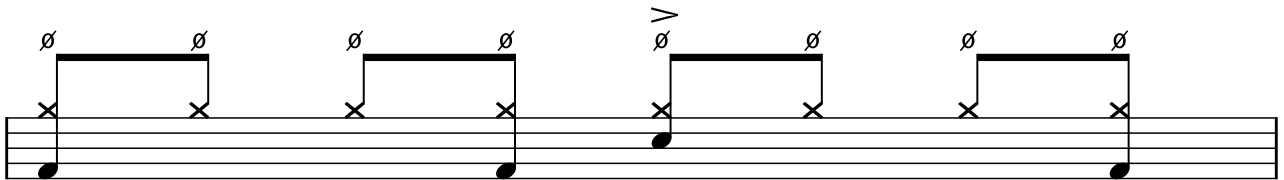
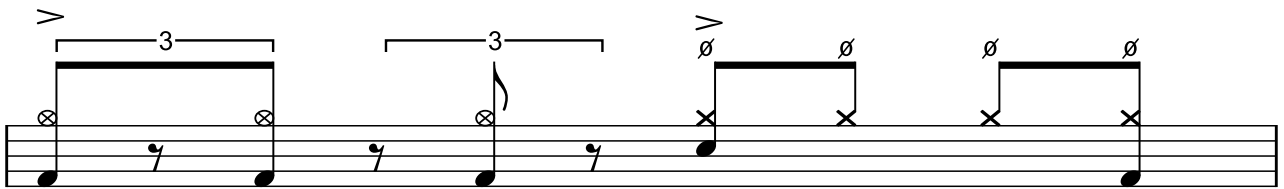
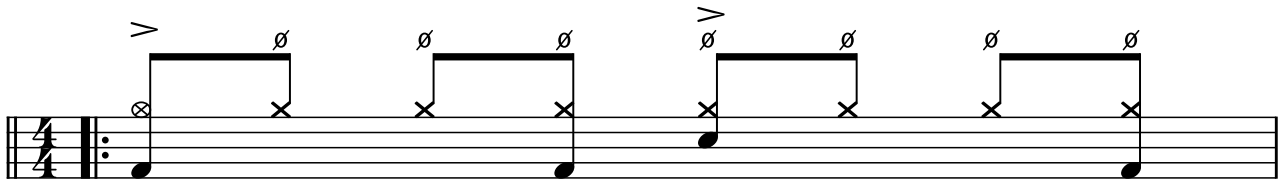
Musical notation for a fill at 4:13. The notation is on a single staff with a treble clef and a key signature of one flat. It consists of four measures. The first three measures each contain a pair of eighth notes with an 'x' above them, indicating an open hihat. The first measure has an accent (>) above the first note. The second measure has an accent (>) above the second note. The third measure has an accent (>) above the first note. The fourth measure has an accent (>) above the first note and an 'ø' above the second note. The notes are on the G4 and A4 lines of the staff.

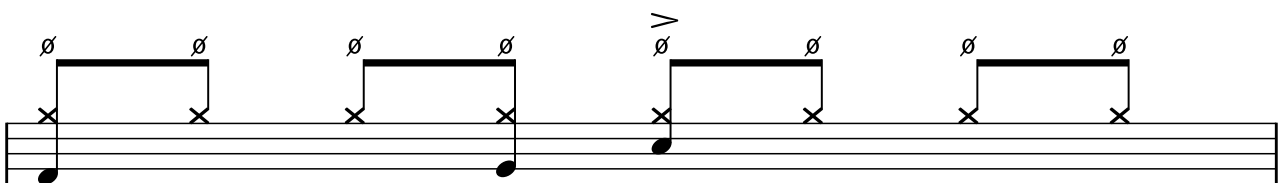
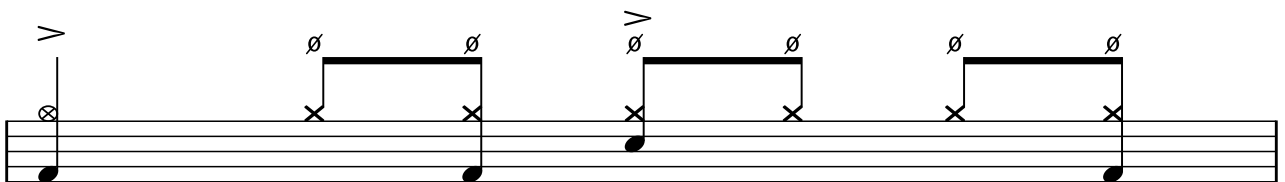
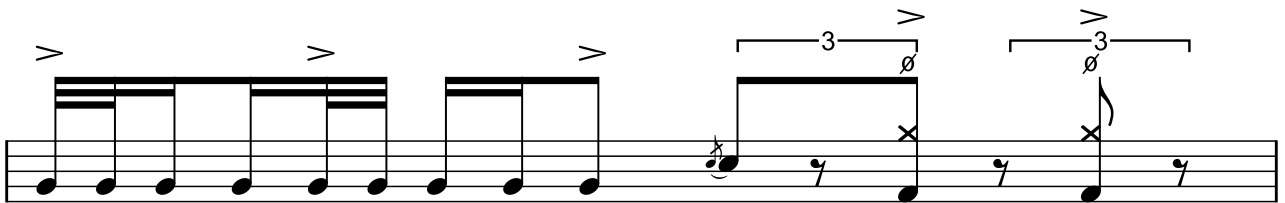
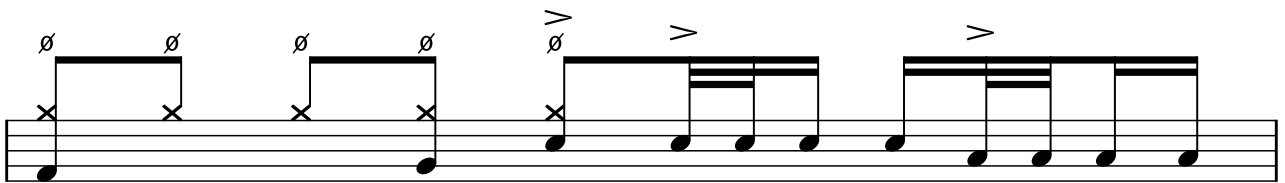
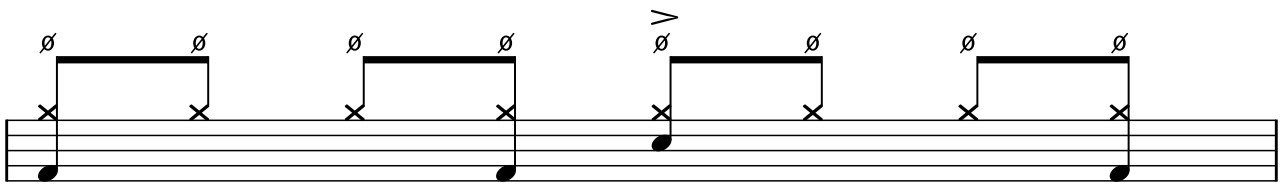
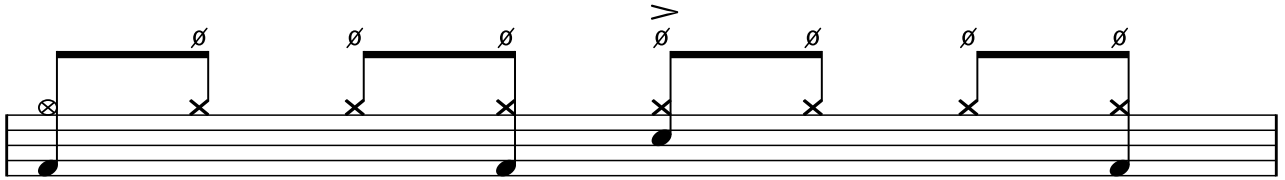
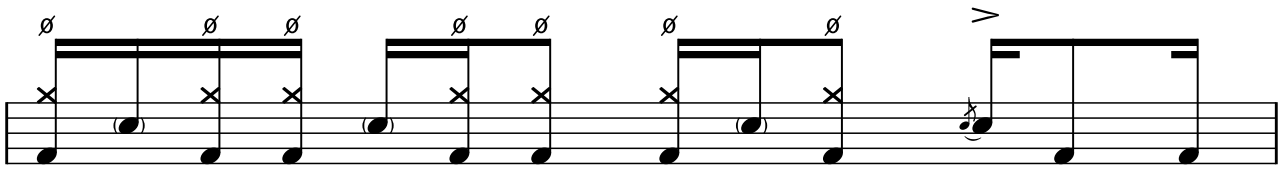
dramatic fill at 4:30

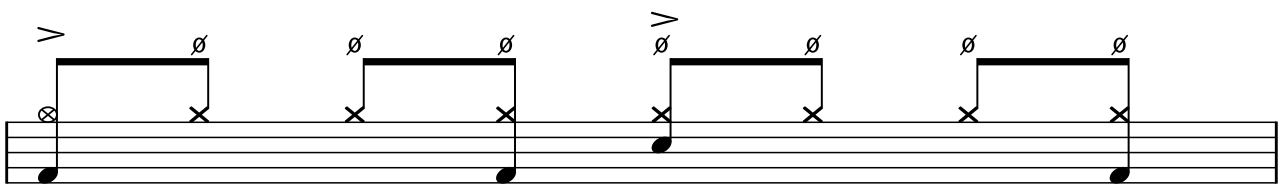
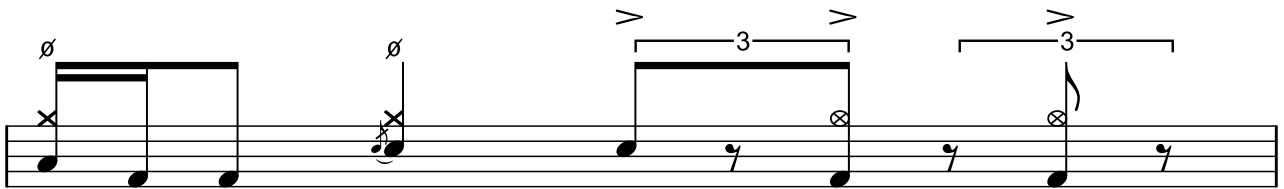
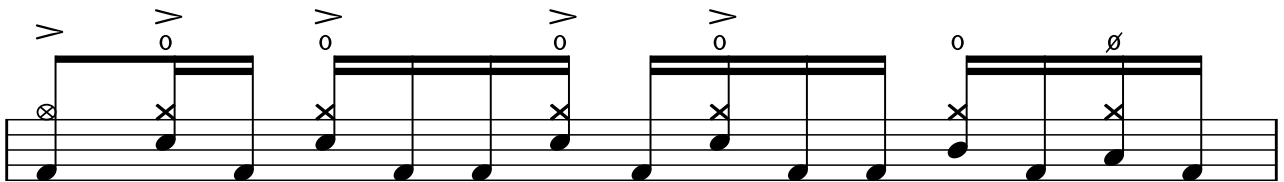
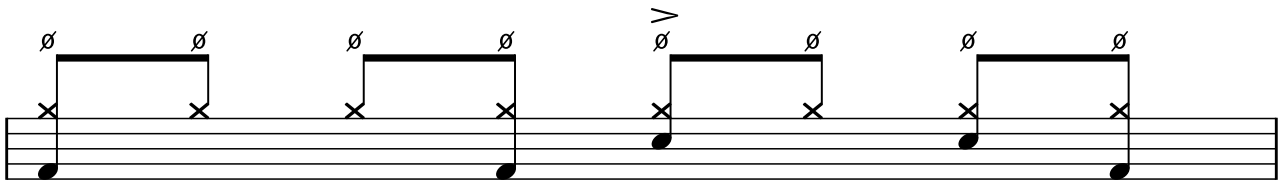
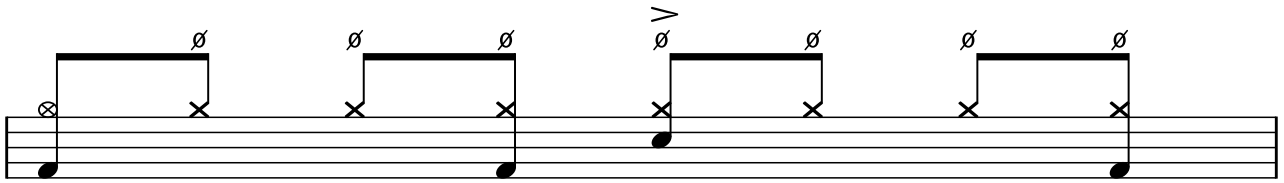
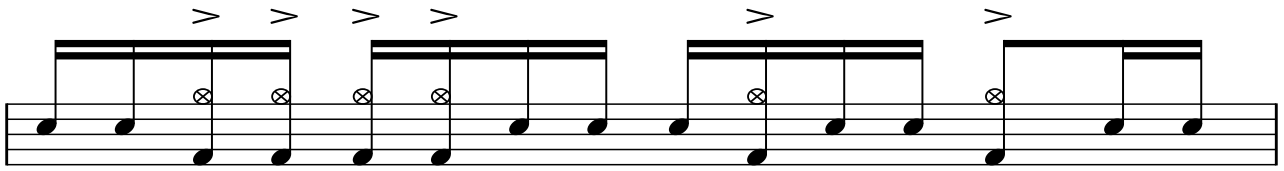
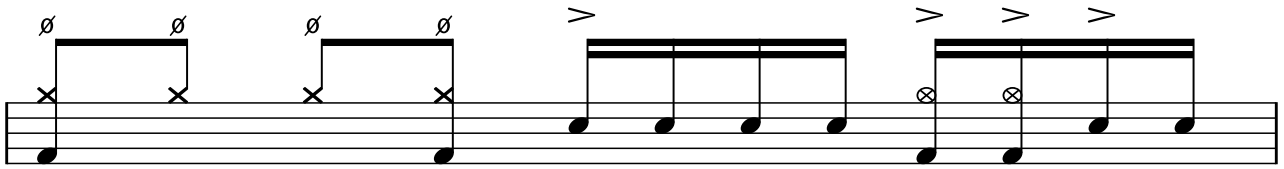
Musical notation for a dramatic fill at 4:30. The notation is on a single staff with a treble clef and a key signature of one flat. It consists of four measures. Each measure contains a pair of eighth notes. The first three measures have an accent (>) above the first note. The fourth measure has an accent (>) above the first note and an 'ø' above the second note. The notes are on the G4 and A4 lines of the staff.

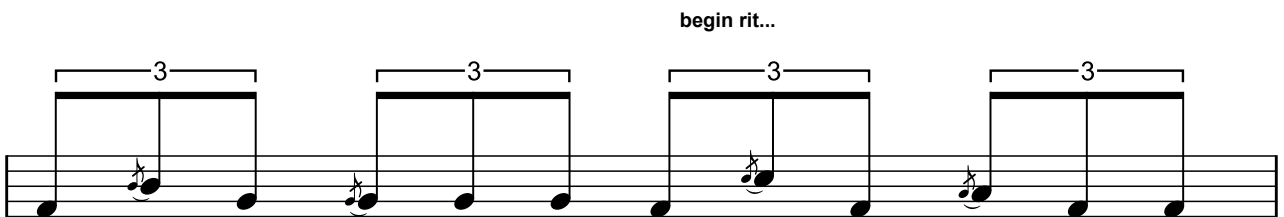
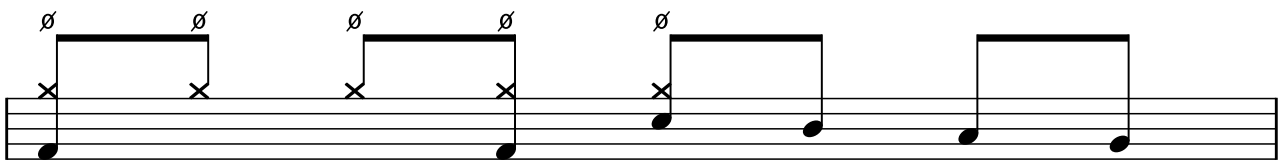
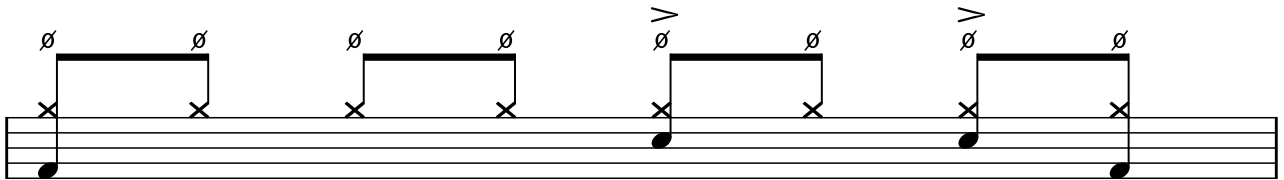
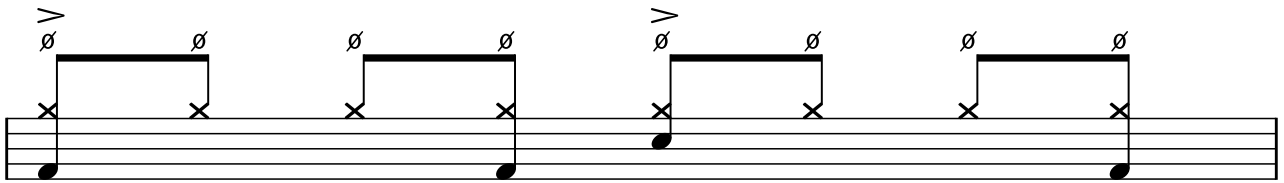
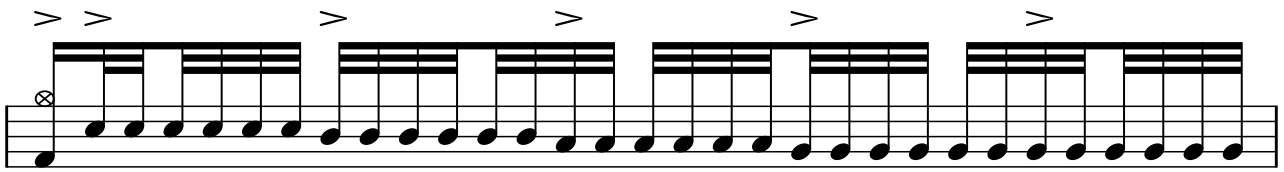
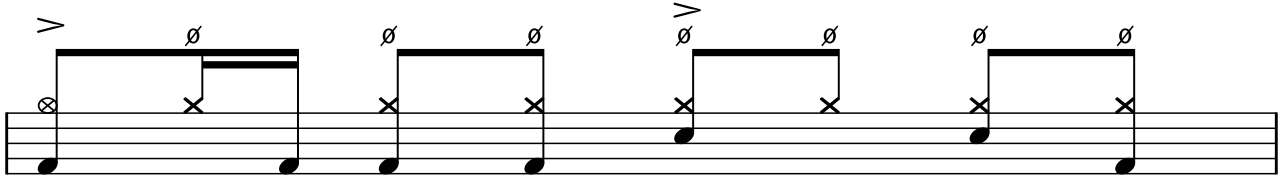
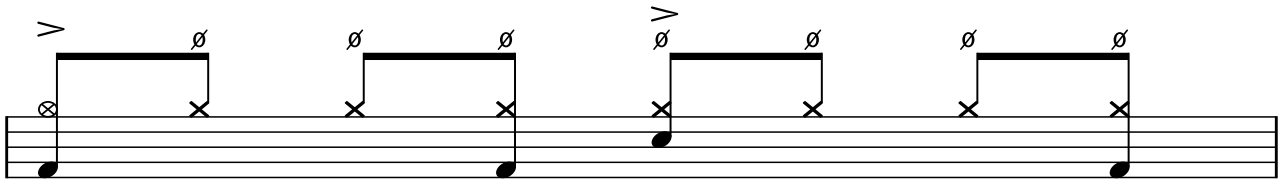


7) End section groove and fills









extreme rit...

