

# Regrouping Basics

Polyrhythms interpreted as sixteenth note grooves

Atma Anur

♩ = 80 to 160

These are a few random but helpful ideas from my book *Light on Rhythm*

the main pulse in mind is 3

4:3

A musical staff with a 4:3 time signature. The top staff contains a sequence of sixteenth notes with stems pointing up, grouped into sixteenth-note pairs. The bottom staff contains a sequence of eighth notes with stems pointing down, grouped into eighth-note pairs. The two sequences are offset by one eighth note. There are 'x' marks above the first and third eighth notes of the bottom staff, and 'x' marks below the first and third sixteenth notes of the top staff. A double bar line is present after the first eighth note of the bottom staff.

here the main pulse is 5, just as an example to be used in the next exercise

5:4

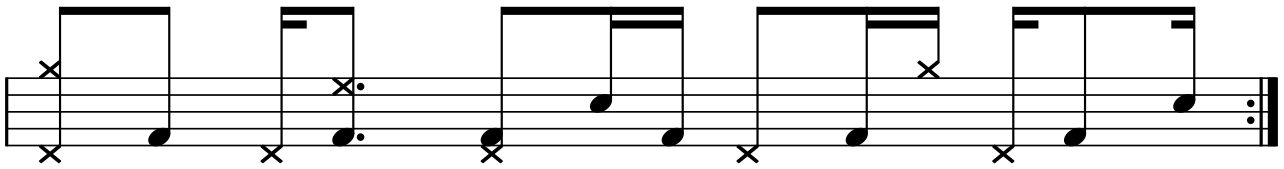
A musical staff with a 5:4 time signature. The top staff contains a sequence of sixteenth notes with stems pointing up, grouped into sixteenth-note pairs. The bottom staff contains a sequence of eighth notes with stems pointing down, grouped into eighth-note pairs. The two sequences are offset by one eighth note. There are 'x' marks above the first and third eighth notes of the bottom staff, and 'x' marks below the first and third sixteenth notes of the top staff. A double bar line is present at the end of the staff.

now back to using 3 as the main pulse in mind

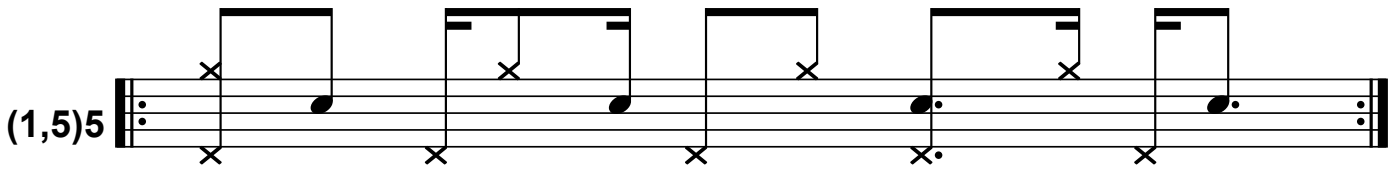
(1)5:4:3

A musical staff with a (1)5:4:3 time signature. The top staff contains a sequence of sixteenth notes with stems pointing up, grouped into sixteenth-note pairs. The bottom staff contains a sequence of eighth notes with stems pointing down, grouped into eighth-note pairs. The two sequences are offset by one eighth note. There are 'x' marks above the first and third eighth notes of the bottom staff, and 'x' marks below the first and third sixteenth notes of the top staff. A double bar line is present at the end of the staff.

A musical staff with a polyrhythm. The top staff contains a sequence of sixteenth notes with stems pointing up, grouped into sixteenth-note pairs. The bottom staff contains a sequence of eighth notes with stems pointing down, grouped into eighth-note pairs. The two sequences are offset by one eighth note. There are 'x' marks above the first and third eighth notes of the bottom staff, and 'x' marks below the first and third sixteenth notes of the top staff. A double bar line is present at the end of the staff.

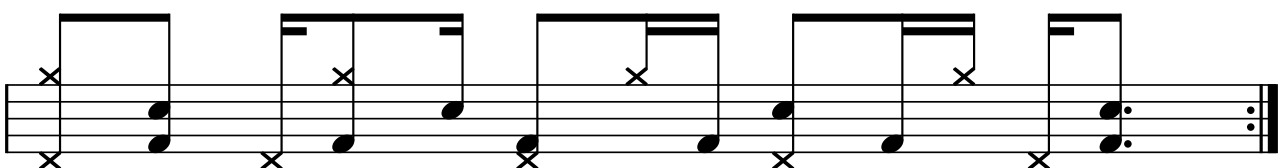
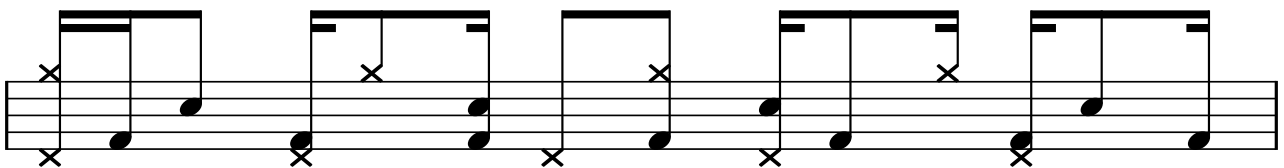
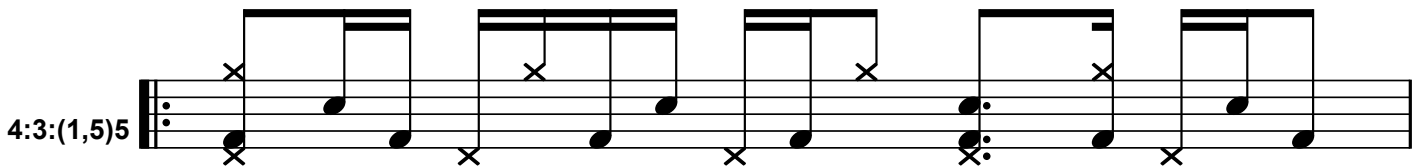


In these examples we begin playing partials of one of the polyrhythmic subdivisions



Playing the 4:3 pattern in the feet while first "singing" the (1,5) of 5 pattern will help in actually feeling the groove. Then move on to playing what is written on the full kit.

3 is the main pulse in mind



4:3:(1,3,5)7

A musical staff in 4/4 time showing a 4:3 polyrhythm. The top voice consists of sixteenth notes with rests, and the bottom voice consists of quarter notes. The notation is:  $4:3:(1,3,5)7$ . The first measure contains a double bar line with repeat dots. The notes are:  $\text{G}_4$  (quarter),  $\text{A}_4$  (quarter),  $\text{B}_4$  (quarter),  $\text{C}_5$  (quarter),  $\text{B}_4$  (quarter),  $\text{A}_4$  (quarter),  $\text{G}_4$  (quarter),  $\text{F}_4$  (quarter),  $\text{E}_4$  (quarter),  $\text{D}_4$  (quarter),  $\text{C}_4$  (quarter),  $\text{B}_3$  (quarter).

A musical staff in 4/4 time showing a 4:3 polyrhythm. The top voice consists of sixteenth notes with rests, and the bottom voice consists of quarter notes. The notes are:  $\text{G}_4$  (quarter),  $\text{A}_4$  (quarter),  $\text{B}_4$  (quarter),  $\text{C}_5$  (quarter),  $\text{B}_4$  (quarter),  $\text{A}_4$  (quarter),  $\text{G}_4$  (quarter),  $\text{F}_4$  (quarter),  $\text{E}_4$  (quarter),  $\text{D}_4$  (quarter),  $\text{C}_4$  (quarter),  $\text{B}_3$  (quarter).

A musical staff in 4/4 time showing a 4:3 polyrhythm. The top voice consists of sixteenth notes with rests, and the bottom voice consists of quarter notes. The notes are:  $\text{G}_4$  (quarter),  $\text{A}_4$  (quarter),  $\text{B}_4$  (quarter),  $\text{C}_5$  (quarter),  $\text{B}_4$  (quarter),  $\text{A}_4$  (quarter),  $\text{G}_4$  (quarter),  $\text{F}_4$  (quarter),  $\text{E}_4$  (quarter),  $\text{D}_4$  (quarter),  $\text{C}_4$  (quarter),  $\text{B}_3$  (quarter).

Here we return to using the voices of sixteenths against the simple polyrhythm 4:3

(1,2)4:3

A musical staff in 4/4 time showing a (1,2)4:3 polyrhythm. The top voice consists of sixteenth notes with rests, and the bottom voice consists of quarter notes. The notation is:  $(1,2)4:3$ . The first measure contains a double bar line with repeat dots. The notes are:  $\text{G}_4$  (quarter),  $\text{A}_4$  (quarter),  $\text{B}_4$  (quarter),  $\text{C}_5$  (quarter),  $\text{B}_4$  (quarter),  $\text{A}_4$  (quarter),  $\text{G}_4$  (quarter),  $\text{F}_4$  (quarter),  $\text{E}_4$  (quarter),  $\text{D}_4$  (quarter),  $\text{C}_4$  (quarter),  $\text{B}_3$  (quarter).

(1,3)4:3

A musical staff in 4/4 time showing a (1,3)4:3 polyrhythm. The top voice consists of sixteenth notes with rests, and the bottom voice consists of quarter notes. The notation is:  $(1,3)4:3$ . The first measure contains a double bar line with repeat dots. The notes are:  $\text{G}_4$  (quarter),  $\text{A}_4$  (quarter),  $\text{B}_4$  (quarter),  $\text{C}_5$  (quarter),  $\text{B}_4$  (quarter),  $\text{A}_4$  (quarter),  $\text{G}_4$  (quarter),  $\text{F}_4$  (quarter),  $\text{E}_4$  (quarter),  $\text{D}_4$  (quarter),  $\text{C}_4$  (quarter),  $\text{B}_3$  (quarter).

(1,4)4:3

Musical notation for the (1,4)4:3 pattern. It consists of three measures on a five-line staff. Each measure contains a pair of notes: a quarter note on the first line (G4) and a quarter note on the second line (A4). Above the first line, there are three 'x' marks, one above each measure, indicating fretted notes. The first 'x' is on the first line, the second on the second line, and the third on the third line. The staff ends with a double bar line and repeat dots.

(2,3)4:3

Musical notation for the (2,3)4:3 pattern. It consists of three measures on a five-line staff. Each measure contains a pair of notes: a quarter note on the second line (A4) and a quarter note on the third line (B4). Above the second line, there are three 'x' marks, one above each measure, indicating fretted notes. The first 'x' is on the second line, the second on the third line, and the third on the fourth line. The staff ends with a double bar line and repeat dots.

(3,4)4:3

Musical notation for the (3,4)4:3 pattern. It consists of three measures on a five-line staff. Each measure contains a pair of notes: a quarter note on the third line (B4) and a quarter note on the fourth line (C5). Above the third line, there are three 'x' marks, one above each measure, indicating fretted notes. The first 'x' is on the third line, the second on the fourth line, and the third on the fifth line. The staff ends with a double bar line and repeat dots.

(2,4)4:3

Musical notation for the (2,4)4:3 pattern. It consists of three measures on a five-line staff. Each measure contains a pair of notes: a quarter note on the second line (A4) and a quarter note on the fourth line (C5). Above the second line, there are three 'x' marks, one above each measure, indicating fretted notes. The first 'x' is on the second line, the second on the third line, and the third on the fourth line. The staff ends with a double bar line and repeat dots.